

IMPORTANT SAFETY INFORMATION

Please read this instruction thoroughly before fitting the tray.
This product is recommend to be fitted by a workshop or qualified mechanical person.

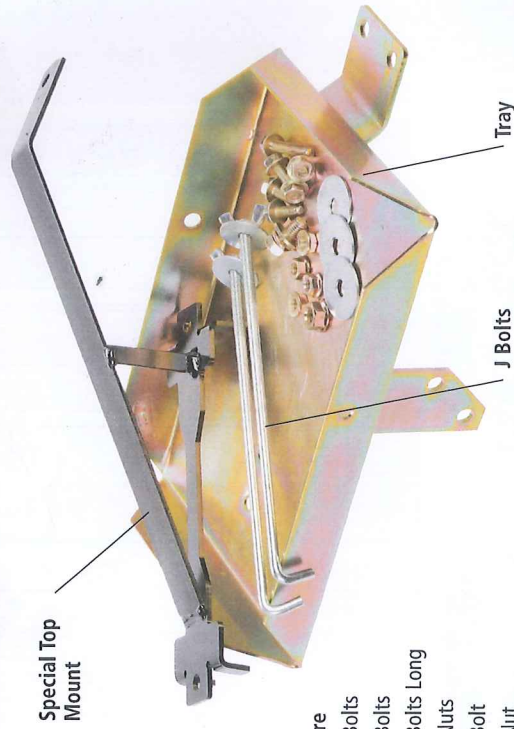
WARNINGS

- Before installation, make sure that the vehicle is stationary and the wheels chocked.
- Be careful when laying wires, not to cause any electrical shorts or wire breakage.
- After installation ensure the bonnet can close without hitting the newly installed battery and battery tray.

SPECIFICATIONS

Max Battery Size (mm)	L265 x W174 x H200
Max Battery Weight	19.6Kg
Recommended batteries	Optima D34 & Exide Orbital (Fully Sealed AGM type due to close proximity to wiring and computer)
Approximate fitting time	1.5 hours
Special tools	Right Angle Drill
Recommended Dual Battery System	P/n: IDC25, DBC100, DBC150, VSR100, VSR200
Tray Location	Engine Bay, Passenger side near firewall

KIT INCLUDES



- Hardware**
- 2 x M8 Bolts
 - 5 x M6 Bolts
 - 1 x M6 Bolts Long
 - 4 x M6 Nuts
 - 1 x M8 Bolt
 - 1 x M8 Nut
 - 3 x M8 Body Washer
 - 1 x 200mm Cable Tie

FITTING INSTRUCTIONS

1. Make sure that the vehicle is stationary, the engine is switched off and cool. Disconnect the positive and negative battery terminal from the main battery.
2. Remove original starting battery
3. Unclip the wiring looms from around the battery and firewall.



4. The white loom bracket on the firewall will need to be bent up for fitting of the battery.



5. The metal pipe that runs under the scuttle panel will require manipulating to fit battery.

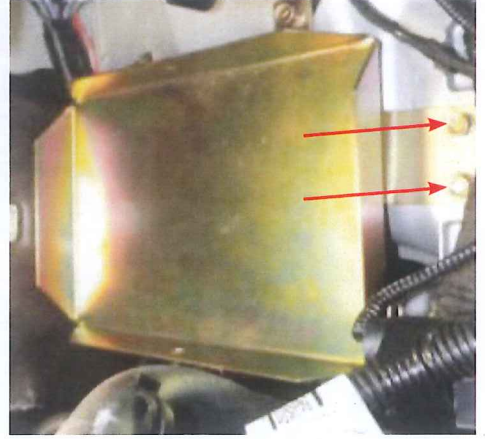
6. Unbolt and cut off mounting bracket for fuel lines leaving the fuel line connected to each other and re-route fuel lines behind fuel filter and filter mount.



7. Place tray in position cable tie the fuel lines to the bracket indent in the tray.



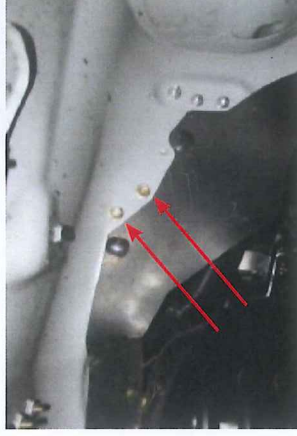
8. Manoeuvre tray into the correct position by lining up the 2 x M6 bolt holes directly behind the original battery tray. Do not tighten bolts.



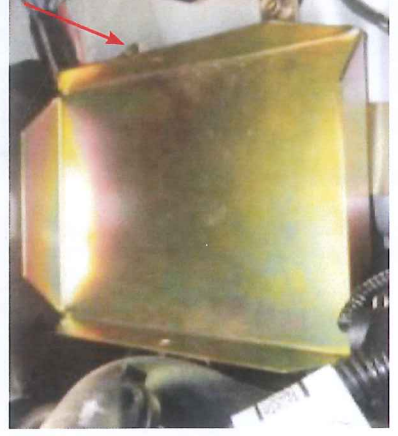
9. Locate and hand tighten 1 x M6 Bolt, Nut and Washer through the hole next to fuel filter.



10. Locate and tighten 2 x M6 Bolts and nuts through inner guard and lower tray arm.



11. Using a right angle drill, and an 8mm drill bit. Drill through the rear tab on the tray behind the fuel filter into the inner guard. BE CAREFUL NOT DAMAGE FUEL LINES OR WIRING LOOMS

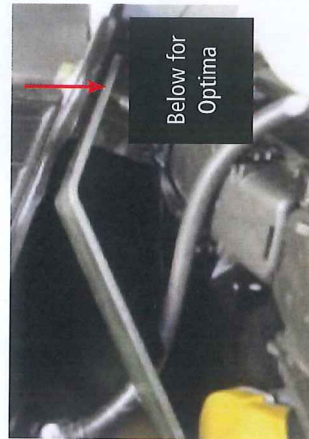


12. Using M8 Bolt push through the drilled hole through tray and inner guard tighten the underside using M8 body washer and M8 nut.

13. Tighten all bolts and nuts connecting the tray to the car.

14. Fit the negative terminal and cable to the battery, then install the battery with the negative terminal to rear of tray. **DO NOT INSTALL BATTERY WITH POSITIVE TERMINAL TO REAR**

15. Unbolt scuttle panel bolt and use 1 x M6 Bolt long and nut in the following ways:
a. Exide Orbital – Top mount sits above the scuttle panel use bolt and washer.
b. Optima D34 – Top mount sits under scuttle panel.



16. Fit J bolts and tighten the wing nuts.



17. Refit factory battery.

18. Reconnect the positive then the negative battery terminal to the main starter battery. Before closing the bonnet make sure the battery and tray do not hit the bonnet.

For assistance throughout the installation procedure please call our customer service representatives on 1800 113 443.