

VEHICLE Isuzu D-MAX and MU-X 2021+

PRODUCT Rack Drop

PRODUCT CODE RDDMAX01

NOTE Bush and crush tube alignment are critical to product function.

IMMEDIATE WHEEL ALIGNMENT REQUIRED BEFORE DRIVING

COMPONENTS SUPPLIED

4x RDDMAX01-1 Sleeve 01

4x RDDMAX01-2 Bush 01

4x RDDMAX01-3 Washer 01

Tools Required:

- Basic Hand Tools
- All thread Style Bushing Puller
- Wheel Alignment Machine



1. Support vehicle on 4 post hoist or equivalent – wheels can stay on the ground.

2. Remove any bash plates etc to get access to steering rack.

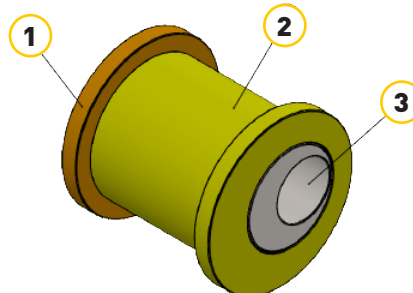
3. Undo tie rod ends from steering rack and pull out of the way.

4. Disconnect steering column universal joint from steering rack and electrical connectors, mark column rotation to ensure ease of assembly.
See figure 1

5. Undo 4 large steering rack bolts.

6. Lift and manipulate/rotate steering rack rotating one side down and slide out and down through the gap.

7. Using all thread style puller remove rubber bushes.
See figure 1



- 1. RDDMAX01-1
- 2. RDDMAX01-2
- 3. RDDMAX01-3

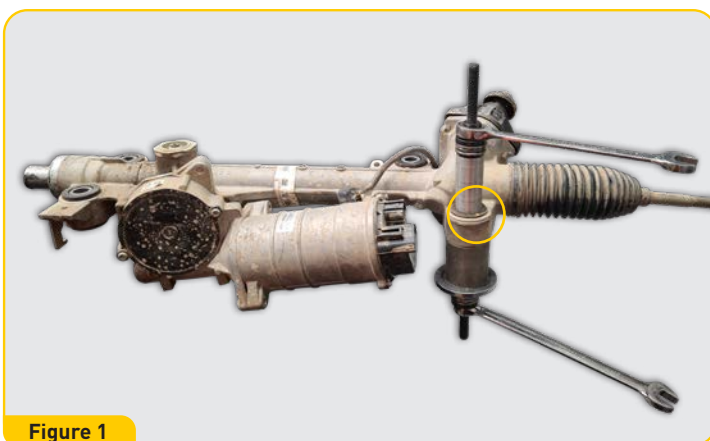


Figure 1

VEHICLE Isuzu D-MAX and MU-X 2021+

PRODUCT Rack Drop

PRODUCT CODE RDDMAX01

NOTE Bush and crush tube alignment are critical to product function.

IMMEDIATE WHEEL ALIGNMENT REQUIRED BEFORE DRIVING

Figure 2



8. Fit rack drop kit.
Bush orientation is CRITICAL – use paint pen to assist alignment (see figure 2 & 3)
9. Re-install steering rack.
10. Connect steering column and electrical connectors.
11. Reconnect tierrod ends, ensure washers and tabs are refitted.
12. Perform wheel alignment.

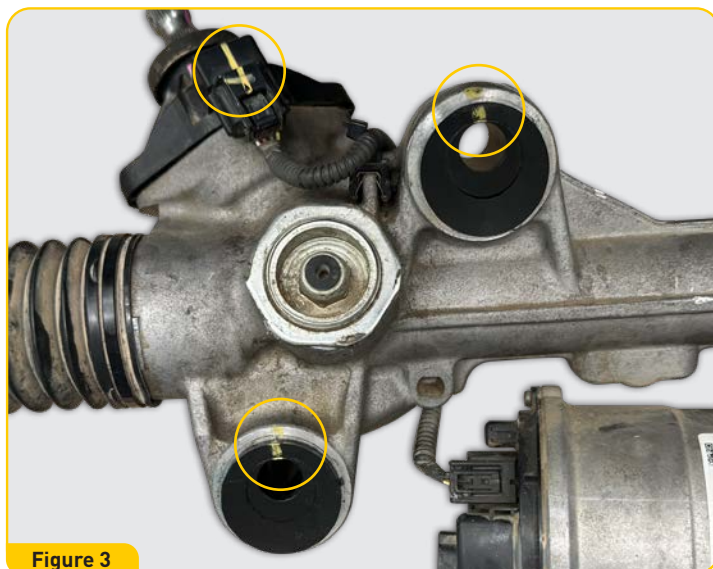


Figure 3